



Autumn Term

Wednesday Sep 8th

-

Friday December 17th

Half Term

Monday October 25th

-

Friday October 29th

Christmas Holiday

Monday December 20th

-

Tuesday January 4th

LATEST OFSTED REPORT

[https://
reports.ofsted.gov.uk/
provider/25/113638](https://reports.ofsted.gov.uk/provider/25/113638)

PLEASE HAVE A LOOK AT OUR WEBSITE

[https://
www.pathfield.devon.sch.uk/
news-events/news/](https://www.pathfield.devon.sch.uk/news-events/news/)

Dear Parents and Carers,

Unfortunately, we have had three positive COVID cases in school this week, which has meant that we have had to take the difficult decision to reintroduce some class and key stage bubbles. This will be reviewed at the end of next week when we can hopefully go back to our more recent plan.

If we have a positive case in a class we are sending out a letter or contacting families directly. It is recommended for close contacts that they carry out a PCR test and you may feel that this is appropriate for your child. I've included the recent NHS advice that I shared a couple of weeks ago that highlights the symptoms to look out for.

The main symptoms of COVID-19 are:

- a high temperature
- a new, continuous cough - this means coughing a lot, for more than an hour, or 3 or more coughing episodes in 24 hours
- a loss or change to sense of smell or taste - this means they cannot smell or taste anything, or things smell or taste different to normal

What to do if your child has symptoms

If your child has any of the main symptoms of COVID-19, even if they're mild:

- Get a PCR test (test that is sent to a lab) to check if they have COVID-19 as soon as possible.
- Your child should stay at home and not have visitors (self-isolate) until you get the test result - they can only leave home to have the test. Check if you and anyone else your child lives with need to self-isolate.

You have been great at keeping us up to date with pupils COVID tests and results coming in, this really helps us.

It is also really helpful if you can contact school on the first day of absence before 10.30. This means that we don't have to call you and saves a lot of time.

I realise that this is a worrying time so please do contact school if there is anything that we can do to help and support you.

Thank you for your support.

Stuart

2021/22 Nasal Flu Vaccinations Information & Parent Link

Dear Parents/guardians,

Your child is in **Reception to Year 11** from September 2021 and is therefore eligible for a Free Nasal Childhood Flu Vaccination. The immunisation team will be visiting your child's school on:

October 7th

Flu vaccination is one of the most effective interventions we have to reduce pressure on the health and social care system, which is going to be more important than ever this year. For this reason, it is essential we deliver the vaccine to as many children as possible to protect them and prevent the spread of infection to those most at risk in society.

Considering the above, we are expecting demand to be high and therefore we urge you to follow the below link to consent to your child's vaccination asap. Even if you do not want your child to receive this vaccination, please complete the consent form stating "decline". On this link you will also find answers to your FAQ's and links to the current Public Health England and manufacturers leaflets. We recommend you discuss this vaccination with your child prior to the date of vaccination.

Prior to completion of the consent, you will need each individual child's unique NHS number – this can be found in their red book, or via this link:

[Find your NHS number – NHS \(www.nhs.uk\)](https://www.nhs.uk)

To complete the consent/decline please click on the link below:

<https://schoolimms.virginicare.co.uk/flu/2021/devon>



We will be **operating a strict policy of closing the consent links 7 days before the school session date**. If you complete a late consent (after the link closing date or on the day), your child(ren) will not be vaccinated at school and you will be offered the opportunity to book them into a local community catch up clinic. This also applies if your child is absent or refuses the vaccination at school.

If you have any difficulties with completing the consent form, please contact the Immunisation Team on our Single Point of Access (SPA).

Tel: 0300 247 0082 (lines open 9:00 until 16:30)

Email: vcl.immunisations@nhs.net

Many thanks for your co-operation.

Virgin Care Immunisation Team



Message from Immunisation Team regarding NHS numbers

Dear Parents/Carers

We are receiving feedback that a lot of parents are requesting their NHS number and having to wait to receive a letter back. Please do not wait for a letter, if you have the NHS number then please do add it to the electronic consent but if you are experiencing problems with this, we have ensured that this is not a mandatory field therefore please continue with the consent without the NHS number. Thank you.

Virgin Care Immunisation Team

Lunch Menu w/c 27/09

<https://www.pathfield.devon.sch.uk/parents-carers/school-lunches/>

Week 1

06/09, 27/09, 18/10, 15/11, 06/12

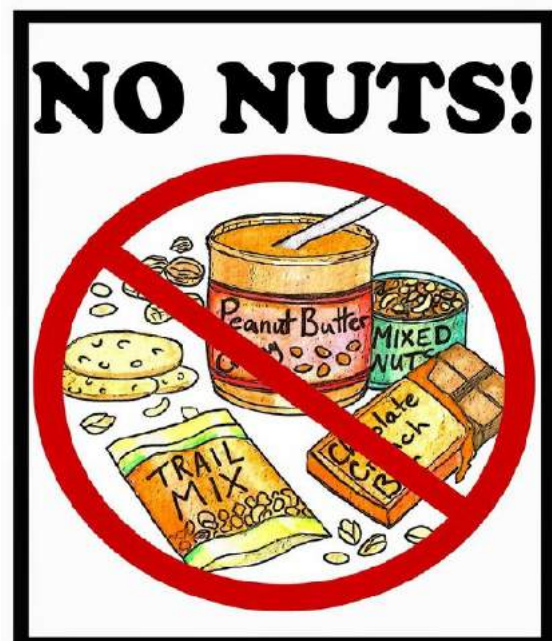
Mon	Sausages Vegetarian sausages Creamed potato or pasta Baked beans Cookie & custard Yoghurt or fresh fruit
Tues	Turkey curry & rice Tomato pasta bake Peas & carrots Lemon sponge & custard Yoghurt or fresh fruit
Wed	Roast pork & apple sauce Vegetarian roast Roast potatoes or pasta Swede & green beans Rice pudding Yoghurt or fresh fruit
Thurs	Lasagne & garlic bread Jacket potato & cheese Mixed Vegetables Bakewell tart & custard Yoghurt or fresh fruit
Fri	Battered cod Cheese tomato pizza Chips or pasta & peas Apple crumble & custard Yoghurt or fresh fruit

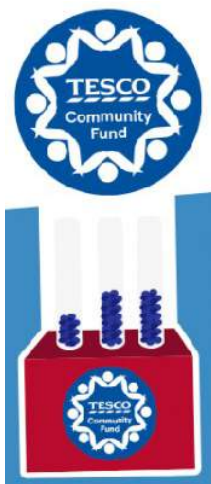
We are a Nut Free School

Just a reminder that we are a Nut Free School.

We ask for parent's / carer's help in making appropriate choices for their children's snacks and lunches. Please do not bring to school anything that includes nuts as we have a number of children and staff who have severe nut allergies. This includes chocolate spreads, e.g. Nutella.

Thank you for keeping our school safe.





Tesco Community Grants Scheme Please vote for Pathfield School



TESCO Community Grants

We have good news to share with you. ☺

Our application to the Tesco Community Grants Scheme has been successful and our project will be put forward to a customer vote in Tesco stores. Voting will commence in store from **1st October and continue to 31st December 2021.**

The project with the highest number of votes across our region will receive £1,500 (or the amount that was requested up to this value), the second placed project £1,000 and the third placed project £500.

Stores which will vote on our project are:

2083	BARNSTAPLE	EX32 8PG	Superstore
4369	BARNSTAPLE HG ST EXP	EX31 1EZ	Express
6269	BARNSTAPLE EXTRA	EX31 2AS	Extra

The money we will receive will go towards our 'Disability & Sensory Outdoor Space' project which we have been working on for over a year now and Avril and her team have already managed to install lots of new equipment around the Pathfield outdoor area at the end of 2020 and throughout 2021.

So please don't forget to collect the blue tokens while shopping in Tesco between October and December and vote for our school! Please spread the news and involve your family and friends as well. :-)

Thank you
and keep your fingers crossed for us!





Join the Care for Kids North Devon on the morning of Halloween for some spooky fancy dress fun, a 5k run to raise funds for the charity.

Enter here: <https://www.webscorer.com/register?raceid=253615>

Time: 10.30am

Date: Sunday 31 October 2021

Place: Rock Park, Barnstaple

Cost: £15



Bike to School Week 2021

27 September – 1 October

- ✓ **Be active** and feel more energised
- ✓ **Help the environment** by replacing a car journey
- ✓ **Improve local air quality** and reduce congestion



Let Sustrans know your family is **cycling or scooting to school** to be in with the chance of **winning a Frog bike**.

Visit www.sustrans.org.uk/biketoschoolweek/pledge



#BikeToSchoolWeek

www.sustrans.org.uk/biketoschoolweek

Registered charity no. 308050 (England and Wales) SC208203 (Scotland). Competition T&Cs apply www.sustrans.org.uk/biketoschoolweek/pledge





Please help Pathfield School WIN from a £5,000 prize fund in the new #easyfundraising 'Refer to Win competition'! We'll get a FREE entry when you sign up before the 1st October! It only takes a moment and it's completely free, so please get involved if you haven't already! Sign up here:

https://www.easyfundraising.org.uk/causes/pathfieldschool/?invite=FOQA26&referral-campaign=c2s&utm_source=rtwsharebox



<https://www.easyfundraising.org.uk/causes/pathfieldschool/>

Raise donations for Pathfield School - Barnstaple whenever you shop online

Turn your everyday online shopping into FREE donations. You helped us raise £77.33 so far. Thank you.

Makaton Sign of the Week

20th - 26th September 2021

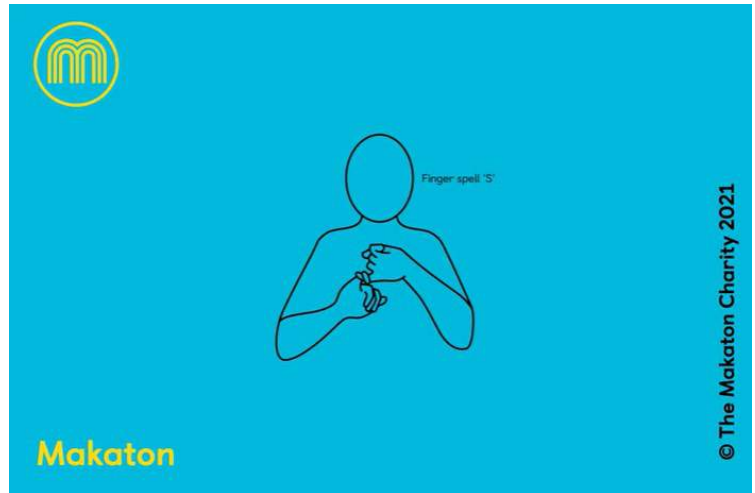
Learn a new word every week and be inspired to get signing.



This week's sign is...

The letter S

Ss



Devon School Term Dates: 2021-22 Academic Year Pathfield School

School Holidays
Occasional Days (no school)

Training Days (no school)
Weekends

Bank Holidays

	Sep-21				
Monday		6	13	20	27
Tuesday		7	14	21	28
Wednesday	1	8	15	22	29
Thursday	2	9	16	23	30
Friday	3	10	17	24	
Saturday	4	11	18	25	
Sunday	5	12	19	26	

	Oct-21				
	4	11	18	25	
	5	12	19	26	
	6	13	20	27	
	7	14	21	28	
1	8	15	22	29	
2	9	16	23	30	
3	10	17	24	31	

	Nov-21				
1	8	15	22	29	
2	9	16	23	30	
3	10	17	24		
4	11	18	25		
5	12	19	26		
6	13	20	27		
7	14	21	28		

	Dec-21				
Monday		6	13	20	27
Tuesday		7	14	21	28
Wednesday	1	8	15	22	29
Thursday	2	9	16	23	30
Friday	3	10	17	24	31
Saturday	4	11	18	25	1
Sunday	5	12	19	26	2

	Jan-22				
3	10	17	24	31	
4	11	18	25		
5	12	19	26		
6	13	20	27		
7	14	21	28		
8	15	22	29		
9	16	23	30		

	Feb-22				
	7	14	21	28	
1	8	15	22		
2	9	16	23		
3	10	17	24		
4	11	18	25		
5	12	19	26		
6	13	20	27		

	Mar-22				
Monday		7	14	21	28
Tuesday	1	8	15	22	29
Wednesday	2	9	16	23	30
Thursday	3	10	17	24	31
Friday	4	11	18	25	
Saturday	5	12	19	26	
Sunday	6	13	20	27	

	Apr-22				
	4	11	18	25	
	5	12	19	26	
	6	13	20	27	
	7	14	21	28	
1	8	15	22	29	
2	9	16	23	30	
3	10	17	24		

	May-22				
2	9	16	23	30	
3	10	17	24	31	
4	11	18	25		
5	12	19	26		
6	13	20	27		
7	14	21	28		
8	15	22	29		

	Jun-22				
Monday		6	13	20	27
Tuesday		7	14	21	28
Wednesday	1	8	15	22	29
Thursday	2	9	16	23	30
Friday	3	10	17	24	
Saturday	4	11	18	25	
Sunday	5	12	19	26	

	Jul-22				
	4	11	18	25	
	5	12	19	26	
	6	13	20	27	
	7	14	21	28	
1	8	15	22	29	
2	9	16	23	30	
3	10	17	24	31	

	Aug-22				
1	8	15	22	29	
2	9	16	23	30	
3	10	17	24	31	
4	11	18	25		
5	12	19	26		
6	13	20	27		
7	14	21	28		