

## What to do next?

If you are interested in learning more or wish to make a referral please contact:

Care Direct 0345 1551 007

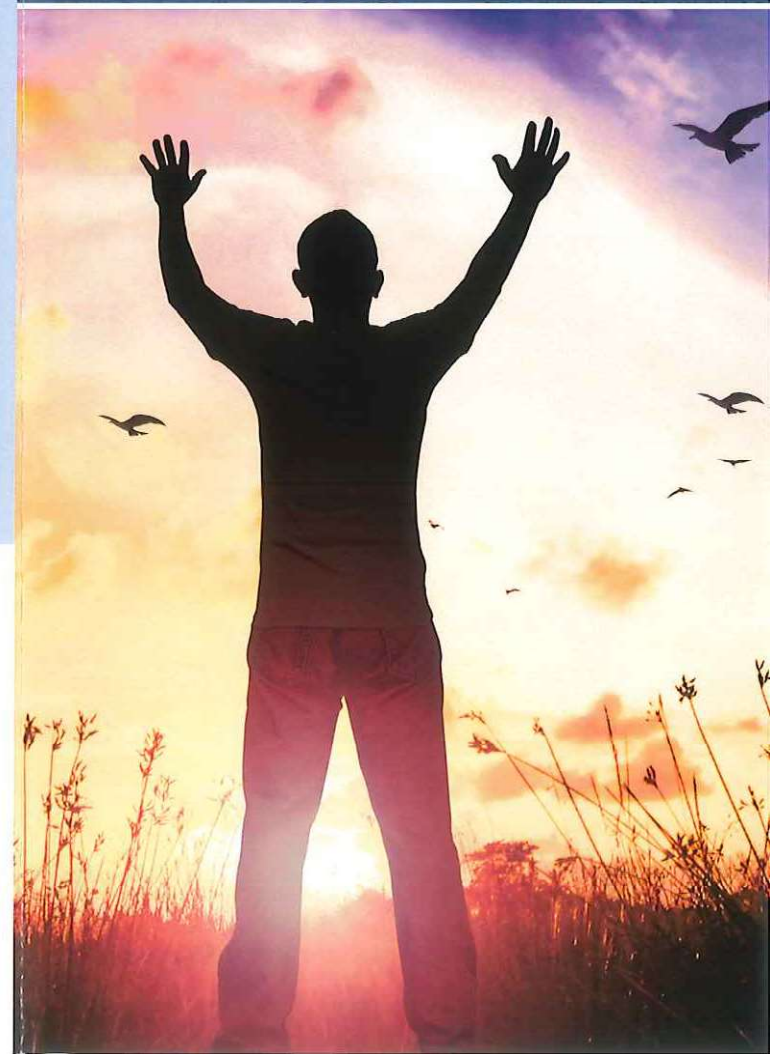
Open 8am - 8pm weekdays

9am - 1pm Saturdays

email: [csc.caredirect@devon.gov.uk](mailto:csc.caredirect@devon.gov.uk)

For further information or a different format phone (0345 or 0845) 155 1015 or email: [customer@devon.gov.uk](mailto:customer@devon.gov.uk)

## Reaching for Independence





## About us

Reaching for Independence (RFI) is Devon County Council's service which helps support people to develop life skills and promote their independence. This service can be offered in your community or at one of our venues around Devon.

The service offers short-term enabling support focussed on helping people to:

- Develop and/or increase their skills
- Take up new opportunities such as starting paid employment
- Gain the skills and confidence to move to other options, such as community facilities and services, independent or supported living.
- The service supports people to achieve the goals that are most important to them, helping them to become more independent and lead a fulfilling life. Where appropriate, technology and/or equipment will be used to help encourage this independence.

Although support provided by the service is short-term, it is not time limited. The time spent by the service supporting a person is decided by the needs of the individual, the specific goals being worked on, and the progress being made by the person towards achieving those goals.

## Who is this service for?

- People aged 18 years and over. The service will also accept referrals for younger people approaching their 18th birthday, who are transitioning into adulthood, where it has been identified that they would have eligible or likely eligible social care needs under adult care and support thresholds
- People known to adult care and health who have eligible social care needs and are currently receiving care and support services to meet those needs
- People new to adult care and health who have had eligible social care needs identified by an assessment, or following initial contact it is thought they would have eligible social care needs at that time
- People with a range of needs, including those with the most complex needs
- People identified as carers or young carers who, as a result of a formal carers assessment, have been identified as having an eligible carer need, and may benefit from the enabling support offered by the service, or
- Anyone else who has been assessed as eligible for enabling support.